

**Amendment # 2  
to the  
Sulphur River Basin Authority  
Clean Rivers Program FY 2004/2005 QAPP**

**Prepared by the Sulphur River Basin Authority  
In Cooperation with the  
Texas Commission on Environmental Quality (TCEQ)**

Questions concerning this QAPP should be directed to:

**Michael Burke  
Sulphur River Basin Authority  
911 N. Bishop, Suite C-104  
Wake Village, Texas 75501  
(903) 223-7887  
mburkesrba@cableone.net**

Effective: September 2004

**Distribution:** QAPP Amendments will be distributed to all personnel on the distribution list maintained by the Planning Agency.

---

Michael Burke, Sulphur River Basin Authority Project Manager Date

---

Mike Buttram, Sulphur River Basin Authority QAO Date

---

Patricia Wise, CRP Project Manager Date

---

Sharon Coleman, CRP Lead QAS Date

---

Laurie Curra, CRP Project QAS Date

**Justification:** This document details the changes made to the basin-wide Quality Assurance Project Plan to update Appendix B for fiscal year 2005.

**Summary of Changes:** The following information in Appendix B is amended to add or reflect changes to:

- Monitoring Sites Tables.
- Maps of Sampling Sites.

**Detail of Changes:**

- **Monitoring Sites Table:** The attached monitoring table updates Table B1.1 in Appendix B to reflect monitoring for FY 2005.  
**Maps:** The attached maps update those maps referenced in Appendix B to reflect monitoring sites for FY 2005.

These changes will be incorporated into the QAPP document and TCEQ and the Sulphur River Basin Authority will acknowledge and accept these changes by signing this amendment.

Table B1.1 – Sampling Process Design and Monitoring Schedule

Basin\_id: 03

Segment: 0301

Region	Station ID	Site Description	Start Date	End Date	SC1/SC2 (1)	Prog Code (2)	E. coli Bacteria	24 Hr DO	Aq. Hab	Routine Benthics	Routine Nekton	Conv (3)	Inst Flow	Field (4)
5	18356	Akin Creek immediately downstream of U.S. Highway 67	9/1/04	8/31/05	SU/TC	RT	4		2	2	2	4	4	4
5	18356	Akin Creek immediately downstream of U.S. Highway 67	9/1/04	8/31/05	SU/TC	DI		2					2	

(1) SU=Sulphur River Basin Authority, TC=Texarkana College

(2) RT=Routine water sampling baseline, DI=DIEL sampling, IS=Intensive/Systematic

(3) Conventional = TSS, TDS, sulfate, chloride, chlorophyll-a, pheophytin, ammonia, nitrate-N, nitrite-N, and total phosphate-P

(4) Field = pH, DO, conductivity, temperature, Secchi depth, and observations

Basin\_id: 03  
 Segment 0302

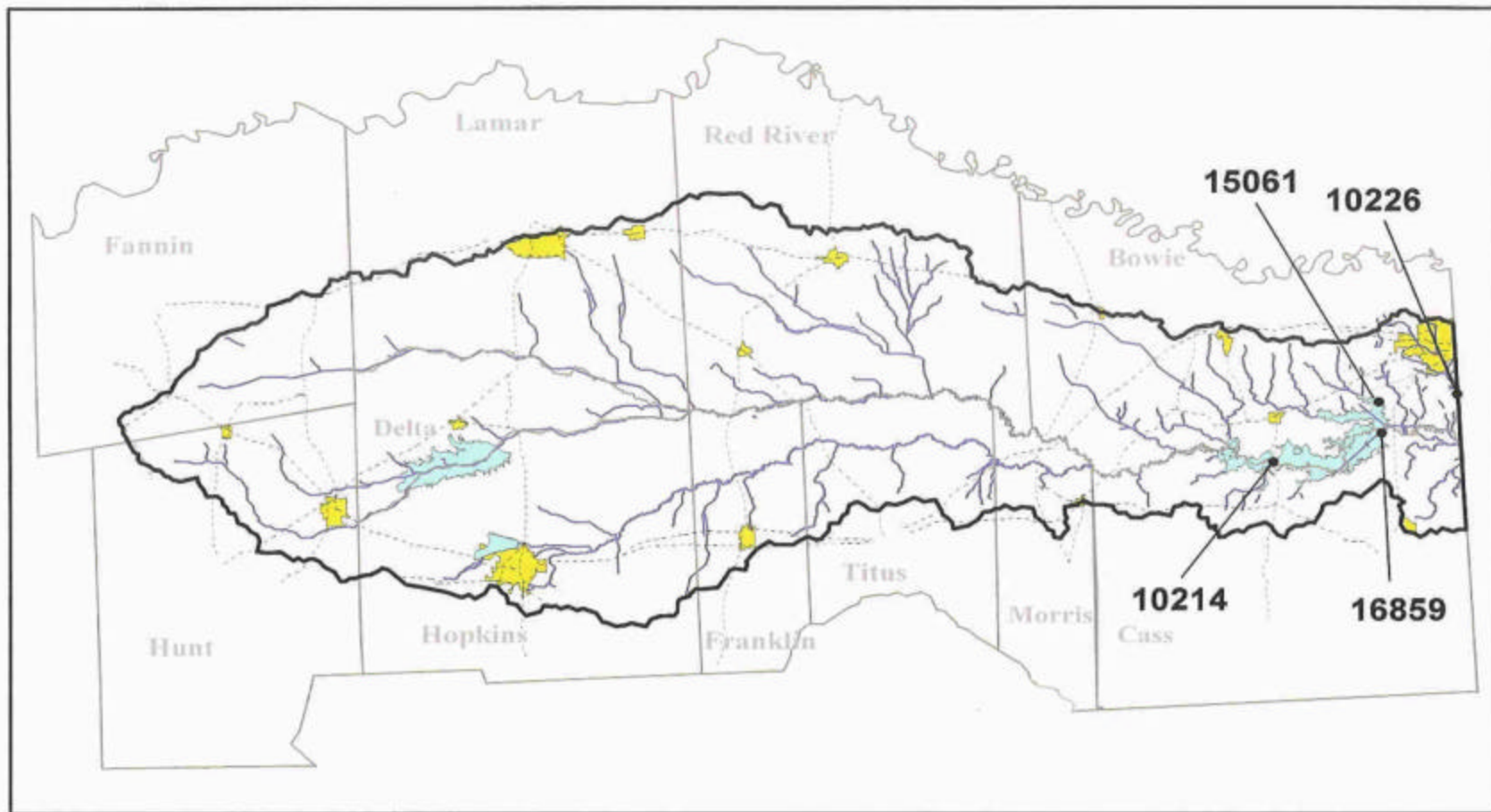
Region	Station ID	Site Description	Start Date	End Date	Source Code (1)	Prog Code (2)	E. coli Bacteria	24 Hr DO	Conv (3)	Field (4)
5	16859	Lake Wright Patman @ IP intake	9/1/04	8/31/05	SU/TC	RT	4		4	6
5	16859	Lake Wright Patman @ IP intake	9/1/04	8/31/05	SU/TC	DI		4		
5	15061	Lake Wright Patman, @ North Shore	9/1/04	8/31/05	SU/TC	RT	4		4	6
5	15061	Lake Wright Patman, @ North Shore	9/1/04	8/31/05	SU/TC	DI		4		
5	10214	Lake Wright Patman @ SH 8	9/1/04	8/31/05	SU/TC	RT	4		4	6
5	10214	Lake Wright Patman @ SH 8	9/1/04	8/31/05	SU/TC	DI		4		

- (1) SU=Sulphur River Basin Authority, TC=Texarkana College
- (2) RT=Routine water sampling baseline, DI=DIEL sampling, IS=Intensive/Systematic
- (3) Conventional = TSS, TDS, sulfate, chloride, chlorophyll-a, pheophytin, ammonia, nitrate-N, nitrite-N, and total phosphate-P
- (4) Field = pH, DO, conductivity, temperature, Secchi depth, and observations

Basin\_id: 03  
 Segment 0304

Region	Station ID	Site Description	Start Date	End Date	Source Code (1)	Prog Code (2)	E. coli Bacteria	24 Hr DO	Aq. Hab	Routine Benthics	Routine Nekton	Conv (3)	Inst Flow	Field (4)
5	10210	Nix Creek at State line Avenue	9/1/04	8/31/05	SU/TC	IS	4		2	2	2	4	4	4
5	10210	Nix Creek at State line Avenue	9/1/04	8/31/05	SU/TC	DI		2						
5	10226	Days Creek at Stateline Road South of Texarkana	9/1/04	8/31/05	SU/TC	RT	4		2	2	2	4	4	4
5	10226	Days Creek at Stateline Road South of Texarkana	9/1/04	8/31/05	SU/TC	DI		2						
5	14475	Waggoner Creek at US 82 between Nash and Texarkana, City of Texarkana (Permit # 10374-007)	9/1/04	8/31/05	SU/TC	IS	4		2	2	2	4	4	4
5	14475	Waggoner Creek at US 82 between Nash and Texarkana, City of Texarkana (Permit # 10374-007)	9/1/04	8/31/05	SU/TC	DI		2						
5	14475	Waggoner Creek at US 82 between Nash and Texarkana, City of Texarkana (Permit # 10374-007)	9/1/04	8/31/05	SU/TC	FL							12	
5	15254	Cowhorn Creek at Tucker St. in Texarkana	9/1/04	8/31/05	SU/TC	IS	4		2	2	2	4	4	4
5	15254	Cowhorn Creek at Tucker St. in Texarkana	9/1/04	8/31/05	SU/TC	DI		2						
5	18355	Waggoner Creek at North Bishop Road approximately 130 m upstream of U.S. Highway 59	9/1/04	8/31/05	SU/TC	IS	4		2	2	2	4	4	4
5	18355	Waggoner Creek at North Bishop Road approximately 130 m upstream of U.S. Highway 59	9/1/04	8/31/05	SU/TC	DI		2						

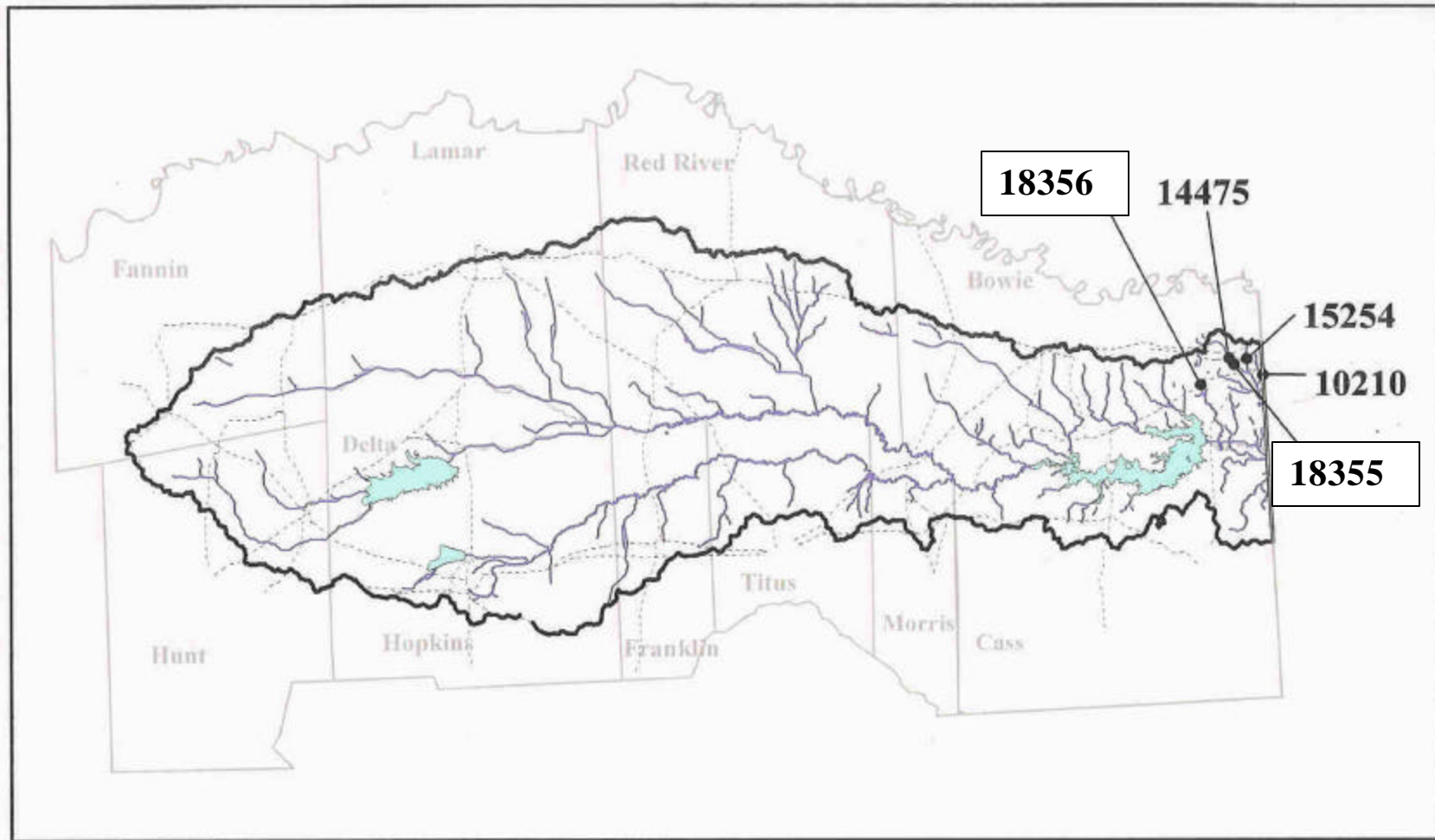
- (1) SU=Sulphur River Basin Authority, TC=Texarkana College  
 (2) RT=Routine water sampling baseline, DI=DIEL sampling, IS=Intensive/Systematic  
 (3) Conventional = TSS, TDS, sulfate, chloride, chlorophyll-a, pheophytin, ammonia, nitrate-N, nitrite-N, and total phosphate-P  
 (4) Field = pH, DO, conductivity, temperature, Secchi depth, and observations



10 0 10 Miles



**Sulphur River Basin  
Routine Sampling Stations FY2005**



10 0 10 Miles



**Sulphur River Basin  
Systematic Stations FY2005**