

Amendment # 2 to the Sulphur River Basin Authority Clean Rivers Program FY 2014/2015 QAPP

***Prepared by the Sulphur River Basin
Authority in Cooperation with the Texas
Commission on Environmental Quality
(TCEQ)***

Effective: Immediately upon approval by all parties

Questions concerning this QAPP should be directed to:

Nancy Rose

Sulphur River Basin Authority

911 N Bishop Street

Wake Village, Texas 75501

Phone # 903-223-7887

FAX # 903-223-7988

Email nrsrba@cableone.net

Justification

The following changes are added in order to sample specific water bodies that are recently listed on the Draft 2014 Texas Integrated Report. Monitoring will be done at three sites on Wright Patman Lake (0302). The water sites and bodies are Stations 14097(AU 0302_01), 16859 (0302_02), and 10213 (0302_03). Each of these AUs has been listed in the Draft 2014 Integrated Report. Additional data will be helpful in defining why these AU's are different than the others currently under study. Each site will be monitored two times, once each during the 3rd and 4th quarter of FY 15 for field data, depth profiles, and diurnal studies.

Detail of Changes

Section/Figure/Table	Page	Change	Justification
Section A1 Approval Page	2	Change 1) Section Manger from 'Laurie Curra' to 'Patricia Wise', 2) Work Leader from 'Patricia Wise' to 'Sarah Eagle', 3) Team Leader Data Management and Analysis from 'Nancy Ragland' to 'Cathy Anderson'	Changes in personnel 1) Section Manger from 'Laurie Curra' to 'Patricia Wise', 2) Work Leader from 'Patricia Wise' to 'Sarah Eagle', 3) Team Leader Data Management and Analysis from 'Nancy Ragland' to 'Cathy Anderson'
Section A3 Distribution List	6	Change from 'Nancy Ragland' and '(512) 239-6546' to 'Cathy Anderson' and '(512) 239-1805'	Changes in personnel Nancy Ragland and 512 239-6546 changed to Cathy Anderson' and '(512) 239-1805'
Section A4 Project/Task Organization	7	Change 1) CRP Work Leader from 'Patricia Wise' to 'Sarah Eagle' 2) Change Team Leader, Data Management and Analysis Team from 'Nancy Ragland' to 'Cathy Anderson'	Changes in personnel 1) CRP Work Leader from 'Patricia Wise' to 'Sarah Eagle' 2) Change Team Leader, Data Management and Analysis Team from 'Nancy Ragland' to 'Cathy Anderson'
Appendix B Sampling Design	Pg 8	Three additional sites are included on Wright Patman	Sites are on the Draft 2014 IR and additional monitoring will

Rationale FY 2015		Lake	supplement the existing data.
Figure A4.1 Organization Chart – Lines of Communication	Pg 10	Change: 1) TCEQ CRP Work Leader from 'Patricia Wise' to 'Sarah Eagle' 2) Change TCEQ DM&A Team Leader from 'Nancy Ragland' to 'Cathy Anderson'	Changes in personnel 1) TCEQ CRP Work Leader from 'Patricia Wise' to 'Sarah Eagle' 2) Change TCEQ DM&A Team Leader from 'Nancy Ragland' to 'Cathy Anderson'
Appendix C Station Location Maps	Pg 12	New map added showing additional station locations.	Update of station locations.

A1 Approval Page

Texas Commission on Environmental Quality

Water Quality Planning Division

Sarah Eagle
Work Leader
Clean Rivers Program

Date

Allison Fischer
Project Quality Assurance Specialist
Clean Rivers Program

Date

Alexandra Smith
Project Manager
Clean Rivers Program

Date

Cathy Anderson
Team Leader
Data Management and Analysis

Date

Monitoring Division

Daniel R. Burke
Lead CRP Quality Assurance Specialist
Laboratory and Quality Assurance Section

Date

Sulphur River Basin Authority

Nancy Rose
SRBA Project Manager

Date

Mike Buttram
SRBA Quality Assurance Officer

Date

A3 Distribution List

Texas Commission on Environmental Quality
P.O. Box 13087
Austin, Texas 78711-3087

Alexandra Smith, Project Manager
Clean Rivers Program
MC-234
(512) 239-6697

Daniel R. Burke
Lead CRP Quality Assurance Specialist
MC-165
(512) 239-0011

Cathy Anderson Team Leader, Data Management and Analysis
MC-234
(512) 239-1805

Sulphur River Basin Authority
911 N Bishop Street
Wake Village, Texas 75501

Nancy Rose, Project Manager (903) 223-7887

Mike Buttram, Quality Assurance Officer
(903) 838-4541

The Sulphur River Basin Authority (SRBA) will provide copies of this project plan and any amendments or appendices of this plan to each person on this list and to each sub-tier project participant, e.g., subcontractors, other units of government. The SRBA will document distribution of the plan and any amendments and appendices, maintain this documentation as part of the project's quality assurance records, and will ensure the documentation is available for review.

A4 PROJECT/TASK ORGANIZATION

Description of Responsibilities

TCEQ

Sarah Eagle

CRP Work Leader

Responsible for Texas Commission on Environmental Quality (TCEQ) activities supporting the development and implementation of the Texas Clean Rivers Program (CRP). Responsible for verifying that the TCEQ Quality Management Plan (QMP) is followed by CRP staff. Supervises TCEQ CRP staff. Reviews and responds to any deficiencies, corrective actions, or findings related to the area of responsibility. Oversees the development of Quality Assurance (QA) guidance for the CRP. Reviews and approves all QA audits, corrective actions, reviews, reports, work plans, contracts, QAPPs, and TCEQ Quality Management Plan. Enforces corrective action, as required, where QA protocols are not met. Ensures CRP personnel are fully trained.

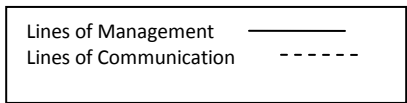
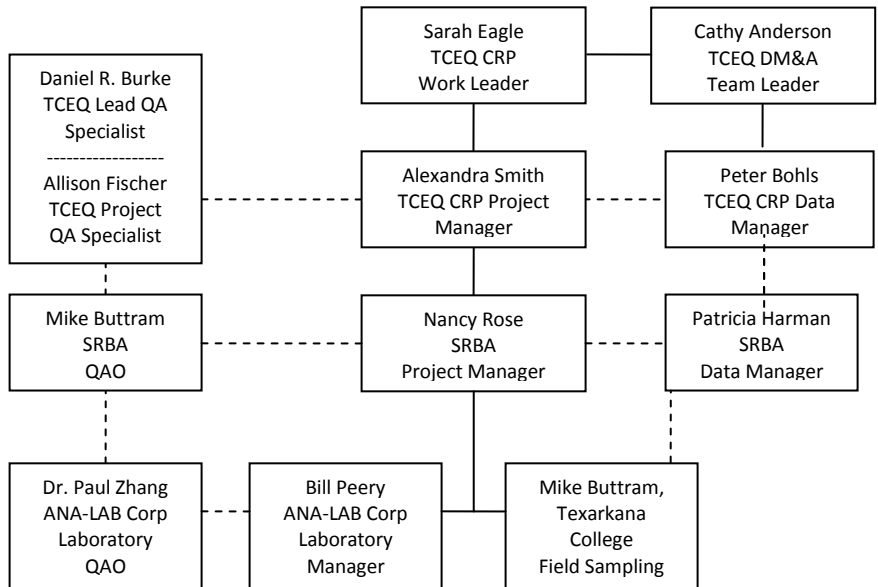
Cathy Anderson

Team Leader, Data Management and Analysis (DM&A) Team

Participates in the development, approval, implementation, and maintenance of written QA standards (e.g., Program Guidance, SOPs, QAPPs, QMP). Ensures DM&A staff perform data management related tasks, including coordination and tracking of CRP data sets from initial submittal through CRP PM review and approval; ensuring that data is reported following instructions in the Surface Water Quality Monitoring Data Management Reference Guide, January 2012, or most current version (DMRG); running automated data validation checks in Surface Water Quality Monitoring Information System (SWQMIS) and coordinating data verification and error correction with CRP PMs; generating SWQMIS summary reports to assist CRP PMs' data review; identifying data anomalies and inconsistencies; providing training and guidance to CRP and Planning Agencies on technical data issues to ensure that data are submitted according to documented procedures; reviewing QAPPs for valid stream monitoring stations, validity of parameter codes, submitting entity code(s), collecting entity code(s), and monitoring type code(s); developing and maintaining data management-related standard operating procedures (SOPs) for CRP data management; and coordinating and processing data correction requests.

Project Organization Chart

Figure A4.1. Organization Chart - Lines of Communication



Appendix B Sampling Process Design and Monitoring Schedule (plan)

Sample Design Rationale FY 2015

The sample design is based on the legislative intent of CRP. Under the legislation, the Basin Planning Agencies have been tasked with providing data to characterize water quality conditions in support of the Texas Water Quality Integrated Report, and to identify significant long-term water quality trends. The following additions will be made to the FY 2015 Monitoring Schedule.

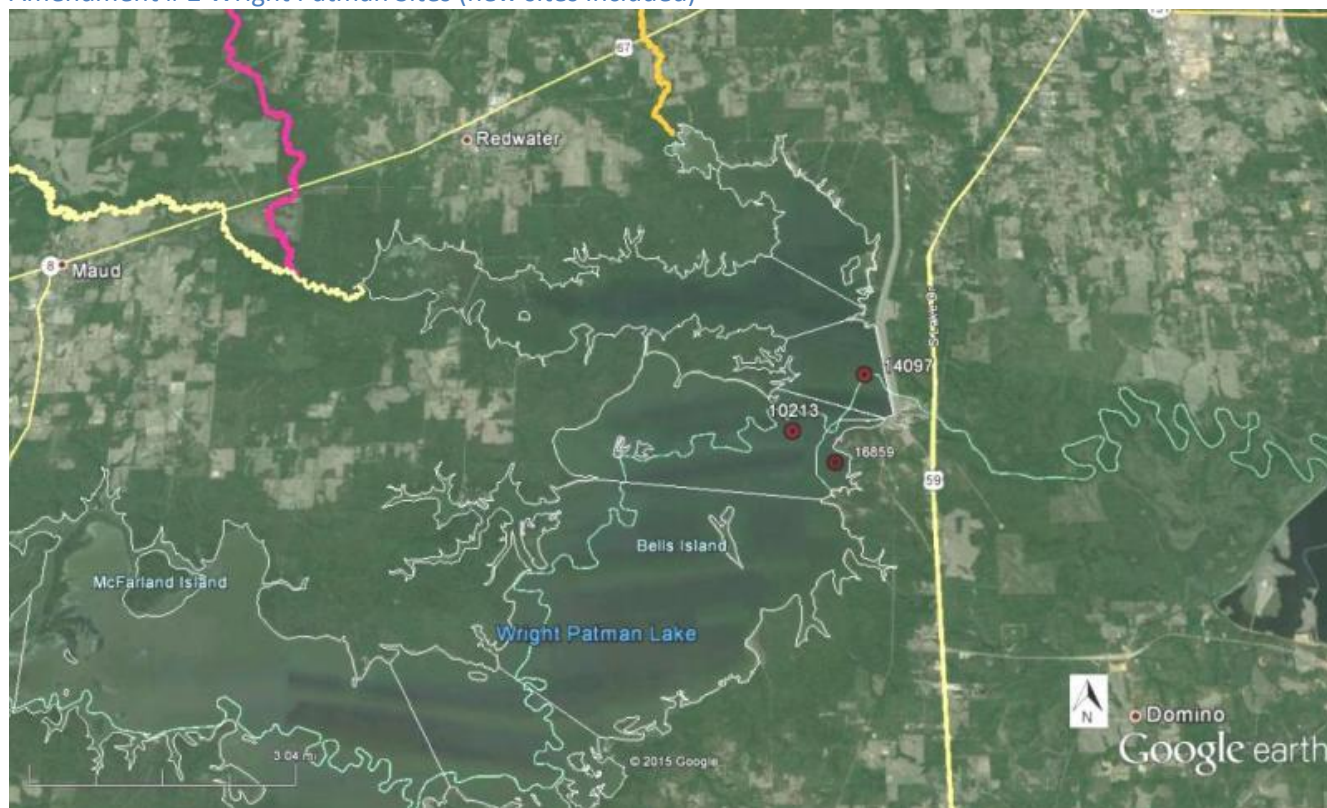
1. At the request of TCEQ personnel, station (ID 10200) on Rock Creek will be included in the FY 2015 monitoring. The station needs two additional sets of diurnal data for assessment purposes.
2. At the request of TCEQ personnel, station (ID 18189) on Stouts Creek will be included in the FY 2015 monitoring. The station needs two additional sets of diurnal data for assessment purposes.
3. Biological monitoring on Wagner Creek is complete and will not be included in the FY 2015 monitoring schedule. Wagner Creek will be monitored quarterly for field parameters, conventional chemistry, bacteria and flow. The site will be monitored twice for diurnal parameters including 24-hour dissolved oxygen, pH, conductivity and temperature.
4. Wright Patman Lake (0302) is a large and complicated older water body, and 10 AUs have been required in order to cover the different types of environments. AU 302_10 has been dropped as not being characteristic of the lake due to being riverine. Of the nine remaining nine stations, the four currently under study are in the upper portions of the lake or in arms of the lake. Stations 14097, 16859, and 10213 (AU's 0302_01, 0302_02, and 0302_03, respectively) represent AUs in the lower portion of the lake. The inclusion of these sites in the summer of 2015 will allow a better comparison of seven AUs for the lake temporally. In May of 2014 thousands of fish died in a fish kill on the lower part of WPL. The cause is thought to be low dissolved oxygen. Existing data is helpful in explaining why the fish kill happened, but the dataset is incomplete. Additional data may give a better picture of why the kill occurred. Each site will be monitored two times, once each during the 3rd and 4th quarter of FY 15 for field data, depth profiles, and diurnal studies including 24-hr dissolved oxygen, temperature, conductivity and pH.

Amendment # 2 Table B1.1 Sample Design and Schedule, FY 2015

Site Description	Station ID	Waterbody ID	Region	SE	CE	MT	24 hr DO	AqHab	Benthics	Nekton	Conv	Bacteria	Flow	Field	Comments
WRIGHT PATMAN LAKE NEAR DAM APPROX 2.1KM SW OF SPILLWAY AND 1.1KM NW OF RAW WATER INTAKE STRUCTURE	10213	0302	5	SU	TC	RT	2							2	
WRIGHT PATMAN LAKE USGS SITE AC 0.25 MILE WEST OF DAM AND 0.5 MILE NORTHWEST OF DAM GATED	14097	0302	5	SU	TC	RT	2							2	
WRIGHT PATMAN LAKE USGS SITE EC MID LAKE 0.8 MILES SOUTHWEST OF BERRY FARM PARK 1.3 MILES NORTH OF ATLANTA STATE PARK ROAD 42	14103	0302	5	SU	TC	RT	4							4	
WRIGHT PATMAN LAKE WRIGHT PATMAN LAKE 450 METERS SOUTH AND 80 METERS WEST OF CORPS ROAD 12 BOAT RAMP IN NORTH SHORE PARK	15061	0302	5	SU	TC	RT	4							4	
WRIGHT PATMAN LAKE 215 METERS WEST AND 370 METERS NORTH OF KNIGHTS BLUFF LANDING BOAT RAMP IN ATLANTA STATE PARK	16205	0302	5	SU	TC	RT	4							4	
WRIGHT PATMAN LAKE AT 135 M UPSHORE OF INTERNATIONAL PAPER RAW WATER INTAKE STRUCTURE 1.5 MI/2.4KM NE OF THE NORTH TIP OF BELLS ISLAND	16859	0302	5	SU	TC	RT	2							2	
WRIGHT PATMAN LAKE IN BIG CREEK ARM APPROX 2.4MI /3.9KM EAST OF FM991 BRIDGE	16860	0302	5	SU	TC	RT	4							4	
AIKEN CREEK AKA AKIN CREEK IMMEDIATELY DOWNSTREAM OF US HIGHWAY 67	18356	0301	5	SU	TC	RT							4	4	
TP LAKE 320 METERS SOUTH AND 110 METERS EAST OF THE INTERSECTION OF TP ACCESS ROAD AND US HIGHWAY 82 IN NEW BOSTON	20813	0302C	5	SU	TC	BS	2				2			2	
TP LAKE 320 METERS SOUTH AND 110 METERS EAST OF THE INTERSECTION OF TP ACCESS ROAD AND US HIGHWAY 82 IN NEW BOSTON	20813	0302C	5	SU	TC	RT					4	4		4	
WHITE OAK CREEK AT FM 900 NORTHWEST OF SALTILLO	10201	0303B	5	SU	TC	RT	4						4	4	
WHITE OAK CREEK AT US 259 NORTH OF OMAHA	10198	0303B	5	SU	TC	RT	4						4	4	
WHITE OAK CREEK AT US 271 SOUTHEAST OF TALCO 20 M DOWNSTREAM OF US HWY 271 BRIDGE	10199	0303B	5	SU	TC	RT	4						4	4	
WHITE OAK CREEK AT TITUS COUNTY FM 1402 NORTH OF MT PLEASANT	21412	0303B	5	SU	TC	RT	4						4	4	
ROCK CREEK AT FM 69 8.0 KM UPSTREAM OF CONFLUENCE WITH WHITE OAK CREEK NORTHEAST OF SULPHUR SPRINGS	10200	0303D	5	SU	TC	BS	2						2	2	
STOUTS CREEK AT US HIGHWAY 67 HOPKINS COUNTY	18189	0303F	5	SU	TC	BS	2						2	2	
DAYS CREEK AT STATELINE ROAD SOUTH OF TEXARKANA	10226	0304	5	SU	TC	RT					4	4	4	4	
WAGNER CREEK AT US HWY 67 / W 7TH STREET IN TEXARKANA	21176	0304C	5	SU	TC	RT	2				4	4	4	4	

Appendix C Station Location Map

Amendment # 2 Wright Patman Sites (new sites included)



Distribution

QAPP Amendments and Revisions to Appendices will be distributed to all personnel on the distribution list maintained by the Planning Agency.

These changes will be incorporated into the QAPP document and TCEQ and the Sulphur River Basin Authority will acknowledge and accept these changes by signing this amendment.